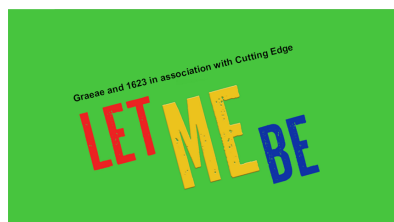


Let Me Be easy- read information.



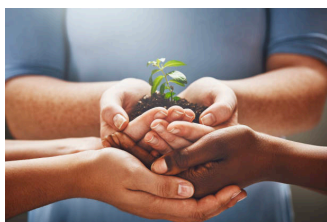
This is an **Easy-Read** information pack about **Let Me Be**.



Let Me Be is a **course** made by **Graeae** Theatre Company and **1623** Theatre Company, in association with **Cutting Edge** Theatre .



The course **explores Shakespeare's characters** and how they relate to **your personal stories**.



This course will be a **safe space** to support creativity and artistic development.



It is **led and created by disabled artists**.



The course is for **actors, directors and theatre makers** at any stage in their career.



You can join this course if you are;
above **16 years** old,



Learning disabled, Deaf, disabled, or neurodivergent.

MARCH 2023

APRIL 2023

MAY 2023

SUN	MON	TUE	WED	THU	FRI	SAT	SUN	MON	TUE	WED	THU	FRI	SAT	SUN	MON	TUE	WED	THU	FRI	SAT
5	6	7	8	9	10	11	2	3	4	5	6	7	8	7	8	9	10	11	12	13
12	13	14	15	16	17	18	9	10	11	12	13	14	15	14	15	16	17	18	19	20
19	20	21	22	23	24	25	16	17	18	19	20	21	22	21	22	23	24	25	26	27
26	27	28	29	30	31		23	24	25	26	27	28	29	28	29	30	31			
							30													



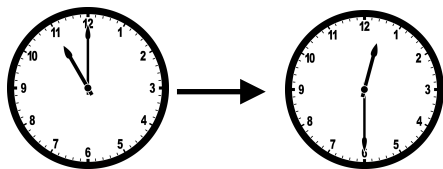
The course will run from **Tuesday 7th March 2023** to
Tuesday 16th May 2023.

APRIL 2023

SUN	MON	TUE	WED	THU	FRI	SAT
						1
2	3	4	5	6	7	8
9	10	11	12	13	14	15
16	17	18	19	20	21	22
23	24	25	26	27	28	29
30						



There will be **no session** on **Tuesday 11th April 2023**
due to Easter.



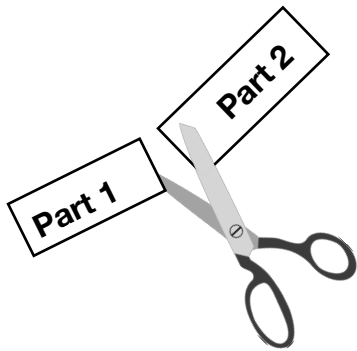
Sessions times will be **11am - 12.30pm** with breaks
included.



Sessions will take place on **Zoom.**



You will need to set aside **1 hour of preparation** time a week, this could be alone or in a pair.



The course is **10 weeks long** and will be **split in two parts**.

MARCH 2023							APRIL 2023						
SUN	MON	TUE	WED	THU	FRI	SAT	SUN	MON	TUE	WED	THU	FRI	SAT
			1	2	3	4							1
5	6	7	8	9	10	11	2	3	4	5	6	7	8
12	13	14	15	16	17	18	9	10	11	12	13	14	15
19	20	21	22	23	24	25	16	17	18	19	20	21	22
26	27	28	29	30	31		23	24	25	26	27	28	29
							30						

We ask that you **commit to the first 5 weeks**.

APRIL 2023							MAY 2023						
SUN	MON	TUE	WED	THU	FRI	SAT	SUN	MON	TUE	WED	THU	FRI	SAT
						1	1	2	3	4	5	6	
2	3	4	5	6	7	8	7	8	9	10	11	12	13
9	10	11	12	13	14	15	14	15	16	17	18	19	20
16	17	18	19	20	21	22	21	22	23	24	25	26	27
23	24	25	26	27	28	29	28	29	30	31			
30													

To offer flexibly, you will be able to **choose if you want to continue** after 5 weeks.

10

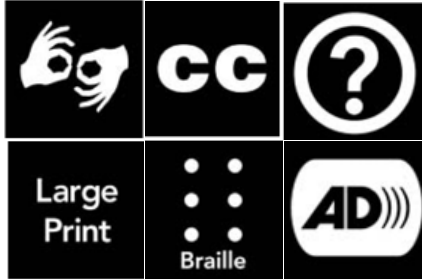
There are **10 spaces** available on this course.



The fee is **£5**. Please let us know if you need help to cover this fee.



If you are offered a space on this course you will be asked to complete an **Access Provision form**.



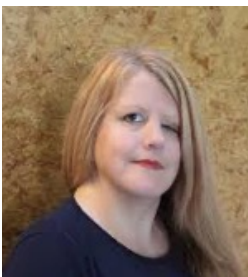
This will **help us to address your access needs** and make sure that your access needs are met.



You will be working with:
1623's Artistic Director, **Ben Spiller**



1623's Associate Artist, **Sam Becket Junior**,



Graeae's Creative Learning Director,
Jodi-Alissa Bickerton.



And Cutting Edge Theatre's Associate Artist, **Abigail Brydon**.

Course content **Part 1.**



This part of the course will be called '**Act I**'



Week 1 - Chat, Explore

You will be asked about your **experience of Shakespeare** and **what you want** from this course. You will discuss which Shakespeare **characters inspire you** and who you connect with.



Week 2 - Write, Respond

You will be asked to create a **message to this character** and think about how they would **reply**.



Week 3 - Share, Edit

You will **share** your messages with the group and think about how to bring you message and response together.



Week 4 & 5 - Rehearse

You will **try out your editing ideas**.

Course content - Part 2.



→ This part of the course will be called '**Act II**'



→ This part is **optional** and will end in a sharing with a **supportive and friendly audience.**



Week 6 - Share

→ You will discuss how you and the group **react to your work** so far?



Week 7 & 8 - Refine

→ You will think about the type of **feed back** you need to bring your work to the next stages.



Week 9 - Scratch

→ You will **present your work** as a collaboration with other artists, as a writer/performer or either.
You will **think about how it feels** to share your work.



Week 10 - Reflect

→ You will be asked to **share how the course has been** for you and what you would like to **do next.**

How to request a booking for Let Me Be.

If you would like to request a booking we will need the following information;



→ **your** full name,



→ your **location** (town/city),



→ **why** you would like to take part in this course,



→ anything else which helps us understand more about **you and your creative practice or aims.**



→ You can send this information in, **writing**, an **audio** recording, or **video** (BSL/SSE/spoken).



→ Please send this information before **Monday 6th February 2023** via e-mail to producer1@cuttingedgetheatproductions.co.uk



→ We will confirm if you have a place on the course or if you get put on the waiting list by **Wednesday 8th February 2023.**