



Information for Artists

This is an **Easy Read** information pack about **Graeae Beyond**.



Graeae Beyond is for **Deaf or Disabled** artists in England.



We believe Deaf and Disabled artists should be **leading** new work.



Working with people from **all backgrounds** and communities is **valuable** and **important** to us.



Beyond is to help Deaf and Disabled artists **grow** in their **career**.



Beyond is run by **Graeae Theatre Company**

In collaboration with...



Cast in Doncaster



Curve in Leicester



Hull Truck Theatre in Hull



Live Theatre in Newcastle



Northern Stage in Newcastle



Nottingham Playhouse in Nottingham



Octagon Theatre in Bolton



Shakespeare North in Prescott



Beyond will offer you;

- help to **connect** with local Theatres,



- advice and **mentoring**,



- **training** and shadowing experience,



- rehearsal **spaces** to create work,

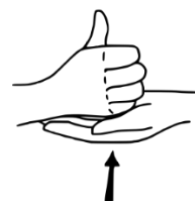


- accessible **opportunities** near you



and

- help with **funding** and bursaries



All of your **access** requirements will be met.



You can apply if you;

- Identify as **Deaf or Disabled** and encounter barriers,



- are **18 years** old or over,



- have your own **idea** for a live performance project,



- have been **involved** in creating **live** performance



and

- would benefit from support by a regional theatre in the **North, North East, North West of England or East Midlands.**

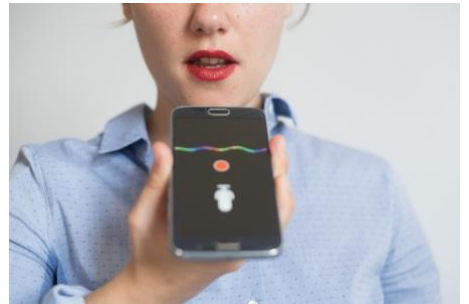


You can complete your Expressions of interest in;

- **written** English,



- an **audio** recording,



- or **video** (BSL/SSE/spoken).



After you have sent us your Expression of Interest, We will contact you within **1 week to confirm** we have received your Email.



For more **information** please contact Graeae's Artist Development Manager Laura at

laura@graeae.org

