



What is Graeae Beyond?

This is an Easy Read **Information** about **Graeae Beyond**.



Are you a **Deaf or Disabled** theatre artist?



Do you want to make **change** in Theatre in **England**?



Do you come across **barriers** when making **theatre**?



Beyond is run by **Graeae Theatre Company**

In collaboration with...



Cast in Doncaster



Curve in Leicester



Hull Truck Theatre in Hull



Live Theatre in Newcastle



Northern Stage in Newcastle



Nottingham Playhouse in Nottingham



Octagon Theatre in Bolton



Shakespeare North in Prescott



Graeae has been supporting talent for **40** years.



Our Artistic Director **Jenny Sealey** MBE says:

“By offering **space, advice and mentoring** without charge, we are opening up the arts for **Deaf and Disabled artists**. Graeae feels a responsibility to do this – we are a trusted ally for disabled artists and we have the connections to **take those careers further.**”



We believe Deaf and Disabled artists should be **leading** new work.



Working with people from all **backgrounds** and communities is **valuable** and **important** to us.



Beyond is to help Deaf and Disabled artists **grow** in their **career**.



Beyond will offer you;

- Help to **connect** with local Theatres



- Advice and **mentoring**



- **Training** and shadowing experience



- Rehearsal **spaces** to create work

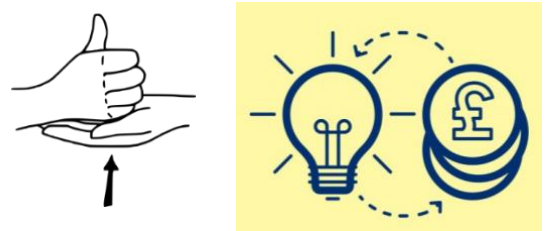


- Accessible **opportunities** near you



and

- help with **funding** and bursaries.



All of your **access** requirements will be met.



You can complete your Expressions of interest in;

- **written** English



- an **audio** recording



- or **video** (BSL/SSE/spoken)



If you have any **questions** please contact Graeae's Artist Development Manager Laura

laura@graeae.org

