

CAST ANNOUNCED FOR AUTUMN TOUR AND LONDON RUN OF

## ONE UNDER

By Winsome Pinnock

Directed by Amit Sharma

Designer — Amelia Hankin

Lighting Designer — Tanya Stephenson

Sound Designer / Composer – Beth Duke

Movement Director – Angela Gasparotto

A Graeae Theatre Company and Theatre Royal Plymouth production  
commissioned by Ramps on the Moon, presented in association with Curve.

**National Press Performances – Theatre Royal Plymouth – The Drum 24 October 14.45 and 19.45**

The cast has been announced for Graeae Theatre Company and Theatre Royal Plymouth's production of Winsome Pinnock's new version of *One Under*.

When a young man jumps in front of a train Cyrus is driving, the mysterious circumstances prompt him to search for answers. In pursuing the truth of Sonny's final hours, Cyrus is led to laundrette worker Christine, as the past begins to catch up with people whose lives are changed forever. Re-written and re-imagined by the 2018 Alfred Fagon Award winning playwright Winsome Pinnock, the new version of her 2005 play *One Under* explores the themes of the power of guilt and the quest for atonement and delves into the fragility of human relationships.

The cast of disabled and non-disabled performers comprises: **Stanley J Browne** (*Romeo and Juliet* – Globe Theatre, *Chigger Foot Boys* – National Theatre, *Titus Andronicus* - Arcola Theatre) as Cyrus, **Reece Pantry** (*Casino Royale* – Secret Cinema, *The Heresy of Love* – New Diorama Theatre) as Sonny, **Shenagh Govan** (*War Crimes* – national tour, *Vera* – ITV) as Nella, **Clare-Louise English** (Co-Founder and Co-Artistic Director Hot Coals Theatre, *The Light* – Channel 4) as Christine, and **Evlyne Oyedokun** (*A Midsummer Night's Dream* - Tobacco Factory Theatre, *Julius Caesar*- Royal Shakespeare Company, *Rosencrantz and Guildenstern are Dead* - Old Vic Theatre) as Zoe.

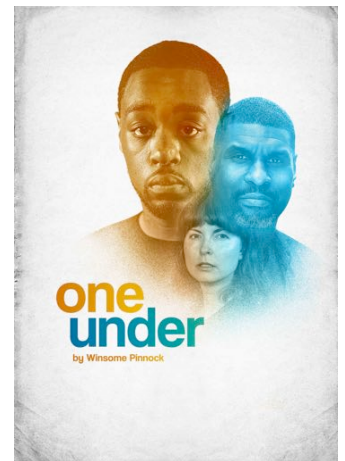
Directed by Amit Sharma, the production will visit Plymouth, Leicester, Ipswich, Leeds, Newcastle, Liverpool, Birmingham, Salisbury and London.

Commissioned by Ramps on The Moon, all performances will creatively integrate audio description and captioning. The original version of *One Under* was staged in 2005 at the Tricycle Theatre (since renamed the Kiln Theatre).

This Graeae and Theatre Royal Plymouth production will mark the two organisations' continued partnership following their award-winning production of Jack Thorne's *The Solid Life of Sugar Water* in 2015. Theatre Royal Plymouth have also been one of the partner organisations on Graeae's *Write to Play* programme in 2019.

**Winsome Pinnock** was the recipient of the prestigious Alfred Fagon Award 2018 for her play *Rockets and Blue Lights*. Most recently, a revival of her 1987 play *Leave Taking* played at the Bush Theatre to critical and commercial success. Her other plays include *The Winds of Change* (Half Moon Theatre), *Picture Palace* (Women's Theatre Group), *A Hero's Welcome* (Women's Playhouse Trust at the Royal Court Theatre Upstairs), *A Rock in Water* (Royal Court Young People's Theatre at the Theatre Upstairs), *Talking in Tongues* (Royal Court Theatre Upstairs) and *Mules* (Clean Break Theatre Company). Winsome has also written for radio and television.

**Amit Sharma** is Deputy Artistic Director at Birmingham Repertory Theatre. He was previously Associate Director at Graeae, and Associate Artistic Director at the 2012 Cultural Olympiad. His production for Graeae and Theatre Royal Plymouth, *The Solid Life of Sugar Water*, received unanimous four and five star reviews, won the Euan's Guide Most Accessible Show of the Fringe Award in 2015 and transferred to the National Theatre's Temporary Space in spring 2016. Other directing credits for Graeae include *Cosmic Scallies* (Edinburgh Festival 2017 & The Studio, Royal Exchange), *Aruna and the Raging Sun* (part of the UK/INDIA Year of Culture) *Prometheus Awakes* and *The Iron Man* (UK Tour). Amit leads on the *Write to Play* programme for Graeae.



Autumn 2019 Tour of

## ONE UNDER

by Winsome Pinnock

Thursday 17 – Saturday 26 October  
Theatre Royal Plymouth  
Box office: 01752 267 222  
[www.theatreroyal.com](http://www.theatreroyal.com)

Tuesday 29 – Wednesday 30 October  
Curve Leicester  
Box office: 0116 242 3595  
[www.curveonline.co.uk](http://www.curveonline.co.uk)

Thursday 31 October – Friday 1 November  
New Wolsey Theatre, Ipswich  
Box office: 01473 295 900  
[www.wolseytheatre.co.uk](http://www.wolseytheatre.co.uk)

Tuesday 5 – Saturday 9 November  
Leeds Playhouse  
Box office: 0113 213 7700  
[www.leedsplayhouse.org.uk](http://www.leedsplayhouse.org.uk)

Tuesday 12 – Wednesday 13 November  
Live Theatre, Newcastle  
Box office: 0191 232 1232  
[www.live.org.uk](http://www.live.org.uk)

Thursday 14 – Friday 15 November  
Unity Theatre, Liverpool  
Box office: 0151 709 4988  
[www.unitytheatreliverpool.co.uk](http://www.unitytheatreliverpool.co.uk)

Tuesday 19 – Saturday 23 November  
Birmingham Repertory Theatre  
Box office: 0121 236 4455  
[www.birmingham-rep.co.uk](http://www.birmingham-rep.co.uk)

Wednesday 27 – Saturday 30 November  
Salisbury Playhouse  
Box office: 01722 320 333  
[www.wiltshirecreative.co.uk](http://www.wiltshirecreative.co.uk)

Tuesday 10 – Saturday 21 December  
Press performance Thursday 12 December  
Arcola Theatre, London  
Box office: 0207 503 1646  
[www.arcolatheatre.com](http://www.arcolatheatre.com)

FOR MORE INFORMATION CONTACT  
David Burns - David Burns PR - 07789  
754089 - [david@davidburnspr.com](mailto:david@davidburnspr.com) -  
[www.davidburnspr.com](http://www.davidburnspr.com)



## NOTES TO EDITORS

### About Graeae

Graeae is a force for change in world-class theatre - breaking down barriers, challenging preconceptions and boldly placing Deaf and disabled artists centre stage. Artistically led by Jenny Sealey, Graeae's signature characteristic is the compelling creative integration of sign language and audio description, which engages brilliantly with both disabled and non-disabled audiences. Championing accessibility and providing a platform for new generations of artists, Graeae leads the way in pioneering, trail-blazing theatre. Recent productions and co-productions include *This Is Not For You*, *Reasons to be Cheerful*, *The House of Bernarda Alba*, *Blood Wedding*, *The Iron Man* and *The Threepenny Opera*. Graeae are a National Portfolio Organisation of Arts Council England.

[www.graeae.org](http://www.graeae.org)

**For Graeae's media language guide please visit**

<https://graeae.org/wp-content/uploads/2016/12/Media-Language-Guide-update.pdf>

### About Theatre Royal Plymouth

Theatre Royal Plymouth is a registered charity providing art, education and community engagement throughout Plymouth and the wider region. We engage and inspire many communities through performing arts and we aim to touch the lives and interests of people from all backgrounds. We do this by creating and presenting a breadth of shows on a range of scales, with our extensive creative engagement programmes, by embracing the vitality of new talent and supporting emerging and established artists, and by collaborating with a range of partners to provide dynamic cultural leadership for the city of Plymouth.

Recent productions and co-productions include *God Of Chaos* by Phil Porter, *The Kneebone Cadillac* by Carl Grose, *You Stupid Darkness!* by Sam Steiner (with Paines Plough) and *The Unreturning* by Anna Jordan (with Frantic Assembly). TRP has a strong track record of presenting and producing international work from companies and artists including Ontroerend Goed, Big In Belgium at the Edinburgh Festival Fringe, Robert Lepage and the late Yukio Ninagawa. In March 2019 TRP unveiled *Messenger*, the UK's largest bronze sculpture created by the artist Joseph Hillier.

[www.theatreroyal.com](http://www.theatreroyal.com)

### About Ramps on the Moon

Ramps on the Moon brings together a collaborative network of Arts Council of England National Portfolio Organisations led by New Wolsey Theatre, Ipswich with strategic partner Graeae Theatre, Birmingham Repertory Theatre, Theatre Royal Stratford East, Nottingham Playhouse, Leeds Playhouse and Sheffield Theatres.

The project follows on from the highly successful production of *The Threepenny Opera* in spring 2014, and in recognition of the under representation and employment of disabled people throughout the industry, particularly in "mainstream" theatre.

Integrating disabled and non-disabled performers and practitioners, this six year programme of work, funded by Art Council England's Strategic Touring Fund, aims to achieve a step change in the employment and artistic opportunities for disabled performers and creative teams, and a cultural change in the participating organisations to enable accessibility to become a central part of their thinking and aesthetics.

[www.rampsonthemoon.co.uk](http://www.rampsonthemoon.co.uk)

### About Curve

Almost one million people annually engage with Curve through performances and projects at our home in Leicester, across the UK and internationally. Under the leadership of Chief Executive Chris Stafford and Artistic Director Nikolai Foster, Curve has developed a reputation for producing, programming and touring a bold and diverse programme of musicals, plays, new work, dance and opera. All of this presented alongside a dynamic mix of community engagement, artist development and learning programmes, which firmly places audiences, artists and communities at the heart of everything we do.

Recent Made at Curve productions include Irving Berlin's *White Christmas*, Dr. Seuss's *The Cat in the Hat* (& UK tour) the world premieres of *Memoirs of an Asian Football Casual*, *An Officer and a Gentleman* (& on national tour) and *Pink Sari Revolution*, Leslie Bricusse's *Scrooge* and the award-winning revival of Andrew Lloyd Webber's *Sunset Boulevard* (& UK tour).

Curve is run by Leicester Theatre Trust Limited, a registered charity (no. 230708). We gratefully acknowledge and welcome the continued support of and partnership with Arts Council England and Leicester City Council.

<https://www.curveonline.co.uk>

## QUOTES

**Winsome Pinnock**, writer of *One Under*, said:

'I'm delighted to be re-visiting my 2005 play *One Under* for Graeae and Theatre Royal Plymouth. I've long admired Graeae's mission and aesthetic, and have always wanted to work with them. I am excited to be working with Amit on exploring the world that the characters inhabit and I'm really looking forward to seeing how new audiences up and down the country will respond to the play.'

**Amit Sharma**, Director of *One Under*, said:

'*One Under* is such a rich, nuanced and beautiful piece of work. It's a play about everyday people, overcoming extraordinary events in the most human way possible. Winsome is someone who has a unique touch writing characters and stories that you feel nothing but empathy for. I'm delighted to be partnering up with Theatre Royal Plymouth again as well as Leicester Curve and Ramps on the Moon to be presenting a play that at its heart is exploring the idea that our past is inextricably linked to our future.'

**David Prescott**, Artistic Associate at Theatre Royal Plymouth said:

'Theatre Royal Plymouth has carved out in The Drum a distinctive and award-winning position in the national and regional development of new work over the last two decades. Graeae have been coming to TRP for over fifteen years and we previously co-produced with them the highly lauded The Solid Life of Sugar Water by Jack Thorne in 2015, directed by Amit. This year we are also proud to be supporting Graeae's Write To Play, developing D/deaf and disabled playwrights in the South West. This production of One Under will tech and premiere in The Drum this October.'

**Michelle Emmerson-Grey** for **Ramps on the Moon** said:

'Ramps on the Moon is proud to be commissioning this vital and exciting piece of theatre: Increasing the representation D/deaf and disabled people on stage, and as part of the creative process, and enabling limitless access for all to enjoy this UK tour.'

Curve's Chief Executive **Chris Stafford** and Artistic Director **Nikolai Foster** said:

'We are proud to be associated with this revival of Winsome Pinnock's moving play. It is a thrilling prospect to welcome the trailblazing Graeae back to Curve, as well as working with the mighty Ramps on the Moon and friends at Theatre Royal Plymouth. Collaborations like this not only offer audiences remarkable theatre, but force our organisations to challenge our existing mechanisms, pushing us further towards true equality. We look forward to welcoming Amit and his extraordinary team to Leicester.'