



GRAEAE
THEATRE COMPANY

Supported by
The Guardian

When

1st - 26th February 2016
PV 3rd February 6:30-8pm
(RSVP required)

Where

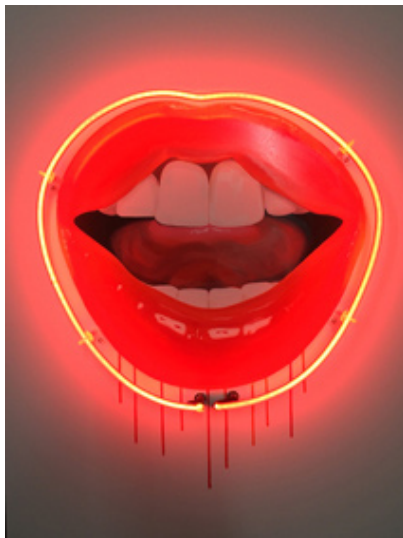
The Guardian
Kings Place, 90 York Way,
London, N1 9GU

Contacts

Ben Cox
CIA
020 3222 0007
ben@centralillustration.com

Richard Matthews
Graeae
020 7613 6906
richard@graeae.org

Artwork by Sara Pope
inspired by Graeae's Jenny
Sealey MBE



Central Illustration Agency
17b Perseverance Works
38 Kingsland Road
London E2 8DD
info@centralillustration.com
+44(0)20 3222 0007
www.centralillustration.com

Graeae Theatre Company
138 Kingsland Road
London E2 8DY
info@graeae.org
+44(0)20 7613 6900
www.graeae.org

PRESS RELEASE

Reframing the Myth

An exhibition by the Central Illustration Agency and Graeae Theatre Company celebrating 35 years of placing Deaf and disabled artists centre stage.

- Sir Peter Blake creates bespoke illustration to be brought to life for the first time by animation pioneers Dog & Rabbit. History in the making!
- Sara Pope completes the world-class line-up of illustrators to explore the story of Jenny Sealey MBE, Artistic Director of Graeae Theatre Company.
- Illustration to be created LIVE at the Reframing the Myth exhibition launch on 3 February by CIA illustrator Simon Spilsbury as Graeae Artist John Kelly performs a remix of Ian Dury's 'What a Waste'.

The Central Illustration Agency (CIA) has been representing some of the world's leading illustrators and animators for over thirty years.

Graeae is a force for change in world-class theatre, breaking down barriers, challenging preconceptions and boldly placing Deaf and disabled artists centre stage.

In February 2016, CIA and Graeae will be launching Reframing the Myth at The Guardian's exhibition space in King's Cross. CIA has partnered 40 of its illustrators with 40 of Graeae Theatre Company's artists to explore their mutual creativity and produce artwork inspired by the experiences of the company's actors, dancers, writers and directors.

The exhibition will interpret the outstanding artistic achievements of the artists that have worked with Graeae over the last 35 years, while also highlighting the challenges that members of the Deaf and disabled community face due to the governments ongoing changes to the benefits system.

CIA artist Sir Peter Blake, himself a patron of Graeae, will be producing an original artwork illustrating the Greek Myth that gave the theatre company its name - a story of resourcefulness. This artwork will also be animated by CIA animation house Dog & Rabbit.

The exhibition will be fully accessible and will include audio description and braille.

"This is a rather extraordinary and unexpected collaboration but one that feels very right: a beautiful creative exchange and sharing of human experiences. It is very exciting and we are all abuzz waiting to see how these individual stories from our collective of artists become represented as glorious new works of art."
Jenny Sealey, Artistic Director and CEO, Graeae Theatre Company

"We were originally introduced to Graeae by Peter Blake, one of the company's patrons and friend of former Graeae collaborator, the much missed Ian Dury. When CIA moved to Shoreditch a few years ago we became neighbours of the theatre company and felt there was a wonderful opportunity to create something unique together. Our illustrators are used to working within the formal structures of the publishing, design and advertising sectors so the experience of joining forces with Graeae's artists has been a liberating and fascinating process."

Ben Cox, Director, CIA

For more information, please don't hesitate to contact Ben Cox or Richard Matthews.

* more images on following pages..



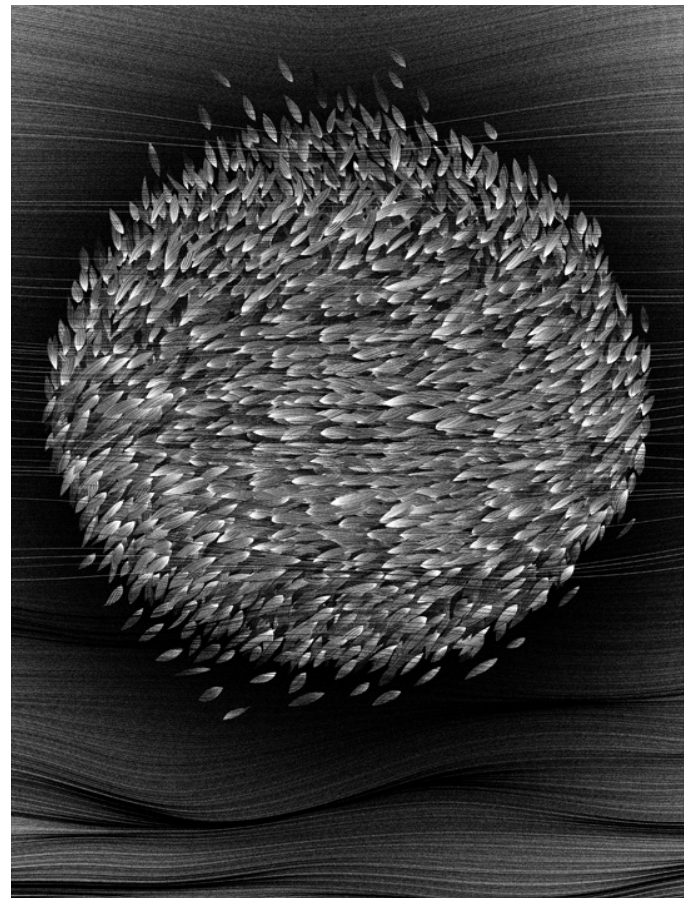
CIA's Anna Higginson & Graeae's David Ellington



CIA's Tobatron & Graeae's Barbara Lisicki



CIA's Susan Burghart & Graeae's Nadia Albira



CIA's Kai and Sunny & Graeae's Nicola Werenowska

For more images, or separate image files, please contact Ben Cox.



GRAEae
THEATRE COMPANY

Supported by
The Guardian

Editors notes...

About CIA

Founded in 1983, the Central Illustration Agency has been representing some of the world's leading commercial artists for over thirty years. Working extensively throughout the publishing, design and advertising community our illustrators have been responsible for many of the most memorable book covers and billboard campaigns of the last few decades. Their previous whole-agency collaboration, with the V&A Museum of Childhood, won the Creative Circle gold award for the best use of illustration. www.centralillustration.com

About Graeae

Graeae is a force for change in world-class theatre - breaking down barriers, challenging preconceptions and boldly placing Deaf and disabled artists centre stage. Artistically led by Jenny Sealey, Graeae's signature characteristic is the compelling creative integration of sign language, captioning and audio description, which engages brilliantly with both disabled and non-disabled audiences. Championing accessibility and providing a platform for new generations of artists, Graeae leads the way in pioneering, trail-blazing theatre. Graeae won the Promotion of Diversity Award at the TMA Theatre Awards UK 2012. www.graeae.org

Contributing artists: Illustrator / Graeae artist

Sir Peter Blake / Graeae myth artwork and animation by Dog & Rabbit, script by Sean Burn
Sara Pope / Jenny Sealey
Harriet Russell / Amy Bethan Evans
Tobatron / Barbara Lisicki
Brian Grimwood / Chris Pavia
Tim Marris / Daryl Beeton
Anna Higgle / David Ellington
Ulla Puggaard / David Toole
Jackie Parsons / Dawn Langley
Jakob Hinrichs / Garry Robson
Sarah J Coleman / Jacqui Adeniji-Williams
Max Ellis / Jamie Beddard
Chris Gilvan-Cartwright / Jez Colborne
Kate Miller / Jo Verrent
Simon Spilsbury / John Kelly
Clare Melinsky / Jodi Alissa Bickerton
Sally Booth / Mel Stevens
Jonny Wan / Milton Lopes
Susan Burghart / Nadia Albina
Rachel Gadsden / Nickie Wildin
Kai & Sunny / Nicola Werenowska
Julene Harrison / Rachel Gadsden
Dust / Robin Bray Hurren
Rose Blake / Rosaleen McDonagh
Lesley Buckingham / Sarah Howard
Mick Marston / Sean Burn
Tatiana Boyko / Sophie Partridge
Martin Haake / Stephen Collins
Nishant Choksi / Stephen Bunce
Richard Wilkinson / Ted Evans
Kerry Hyndman / Tiu Mortley
David Holmes / Tom Wentworth
Tony Heaton / Victoria Oruwari
Mario Wagner / Viviane Macedo
Edward McGowan / Amit Sharma
Jonathan Gibbs / Nabil Shaban
Jon Adams / Arthur Hughes
Ray Smith / Omeima Mudawi Rowlings
Paul Oakley / Lizzie Emeh

For more information, please don't hesitate to contact Ben Cox or Richard Matthews.